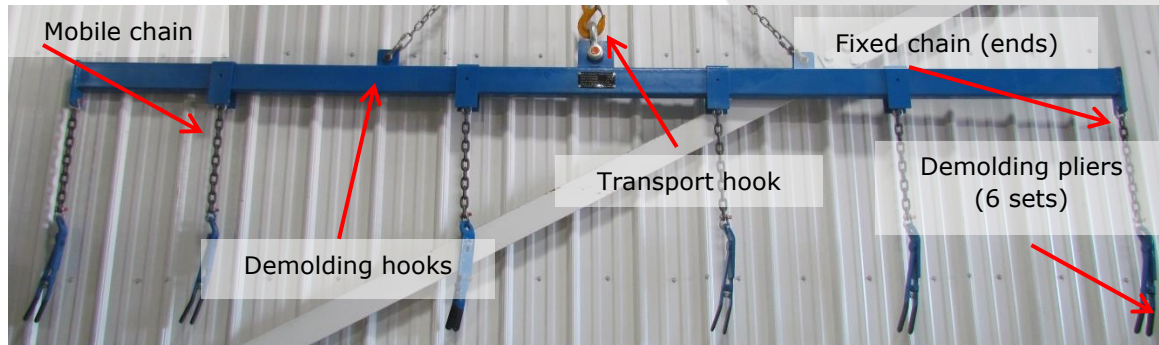
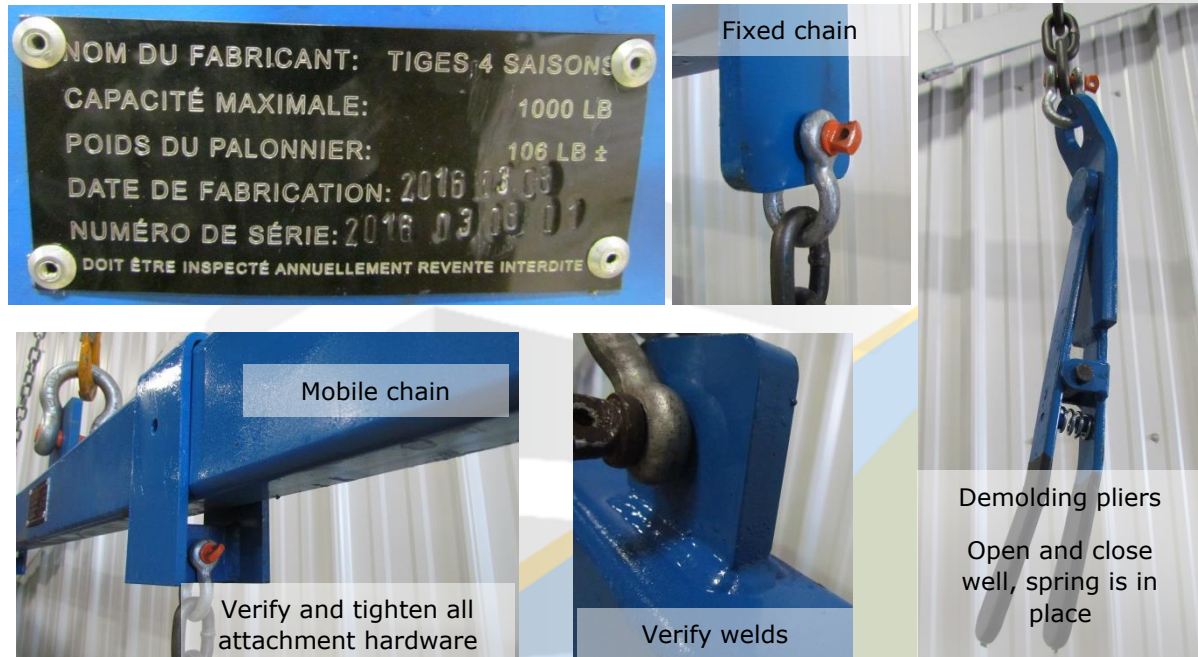


DEMOLDING BEAM INSTRUCTIONS MANUAL

WARNING: It is the responsibility of the owner to insure that all persons working with this equipment have read this manual prior to its use. All operations using demolding beam must be executed by a qualified crane operator.

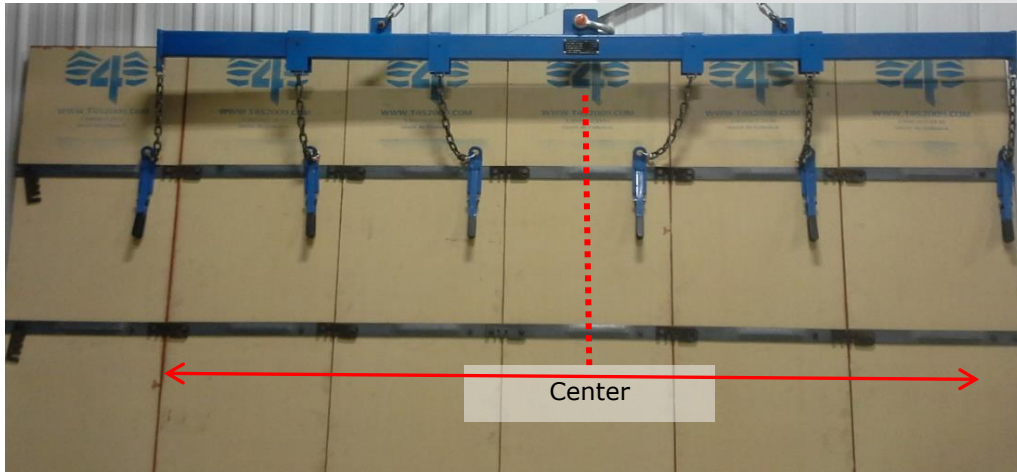


1. Consult identification plate on demolding beam for maximum lift capacity. Prior to use, visually inspect demolding beam. Verify the straightness, inspect welds, rust, chains and all attachment hardware to validate that everything is tightened properly. Verify the demolding pliers are in good working order.

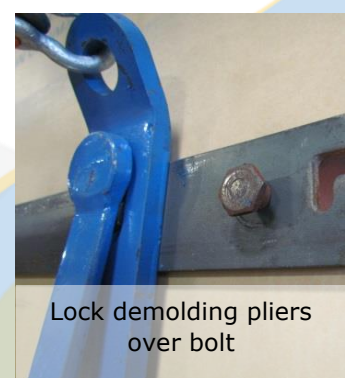
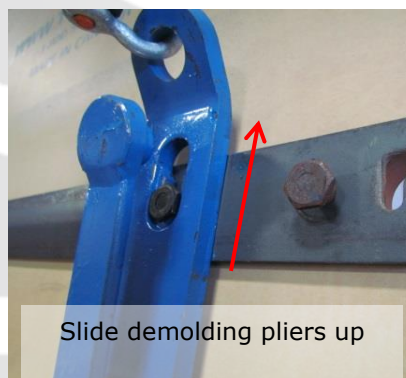
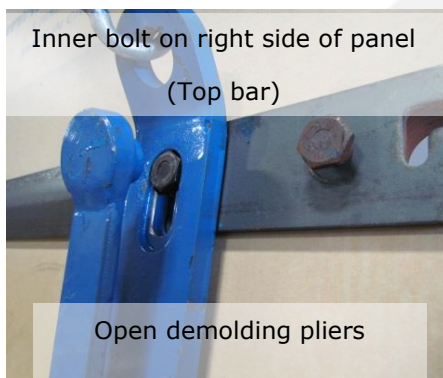


2. Verify that all rod ends are broken off on panels to be stripped. Attach demolding beam to crane/boom truck using demolding hook attachments. Raise demolding beam to the point where the top of the

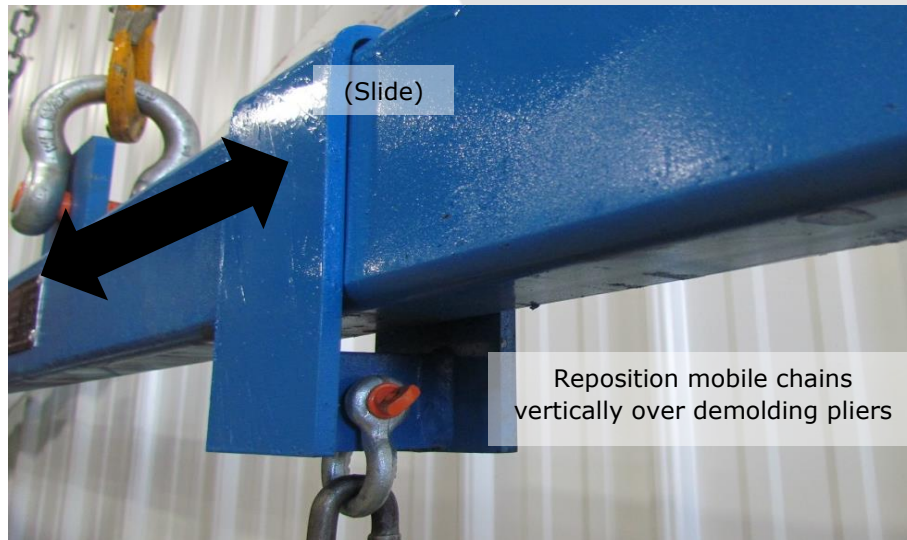
demolding pliers are hanging even with the top bar of the concrete panels selected for hoisting; up to 6 panels can be hoisted at once by the demolding beam.



3. Open demolding pliers and place large opening in the bottom of the pliers over the innermost bolt head on the right side of the highest bar of the concrete panel. While pliers are still in the open position, slide the pliers upwards until the bolt head is positioned at the bottom of the recessed slot of the pliers. Release the demolding pliers into the closed position. Verify that the top male part of the pliers is properly inserted in the bottom female part of the pliers. This is critical to ensure that pliers are properly locked onto the bolt head of the concrete panel.



4. Open the docks at either end of the wall section being stripped but do not open those holding the panels being stripped together. Before hoisting, place the mobile chains holding demolding pliers vertically over pliers to balance load. Slowly hoist panels with a slight angle away from the wall keeping load as balanced as possible.



5. Hoist concrete panels to desired location and repeat the procedure for all other concrete panels requiring demolding.

